



Apple and Pear Varieties

447 Winthrop Road, Deep River, Ct. 06417
(860) 526-9056 www.acergardens.com
email – acer@acergardens.com

Apples: All apples are grown on M-111, a semi-dwarfing rootstock that allow the trees to reach 80% of their standard height or 15-25 ft unpruned. All trees on M-111 may be kept at any height by summer pruning. Trees are resistant to wooly apple aphid, fire blight, root and collar rot. Trees on this rootstock tolerate wet, dry, and poor soil. When fruit is small, thin apples to maximize fall fruit size and reduce weight on limbs. To reduce pest problems, spray with dormant oil just before bud-break in late March or early April.

‘Cortland’	Z. 4-6	Large red apple derived from McIntosh. Great for eating, cooking and cider. Sweet tart, flavorful, non-browning white flesh. Ripens in September. Self-fruiting, but a pollinator like Liberty, Empire, and MacIntosh will increase production.
‘Cox Orange Pippin’	Z. 4-8	Heritage dessert apple. Firm, juicy, sweet, rich flavor. Not tart with a distinct aroma. Complex flavor with hints of orange and mango. Great fresh, baked or in ciders. Ripens mid to late September. Self-fruitful, but a pollinator like Empire is recommended.
‘Empire’	Z. 4-9	Cross of McIntosh and Red Delicious. Sweet apple with a juicy crunch and bright white flesh. Great for eating, roasting, baking, sauteing or even drying. Ripens September – October. Self-fruiting, but a pollinator like Cox Orange Pippin will increase production.



‘Fuji’ Z. 4-9 A sweet, very crisp, and flavorful apple. Good storage apple. Great pollinizer for other apples. Ripens in late October. Self-fruiting, but a pollinator like Granny Smith will increase production



‘Gala’ Z. 4-10 Sweet-tart flavor. Great for fresh eating and baking. Ripens in October. Self-fruiting, but another apple like another Gala or Granny Smith will increase production.



‘Granny Smith’ Z. 6-9 Large, green, crisp and tart. Granny Smith is an all purpose apple. Ripens in late October. Almost any other apple variety will make a good pollinator.

SOLD OUT



‘Liberty’ Z. 4-7 Crisp flavor, good disease resistance and is cold hardy. Ripens in September. No pollinator needed, but a pollinator like Cortland or Empire will increase production.



‘Mcintosh’ Z. 4-8 Cold hardy. Crisp and a sweet-tart flavor. Ripens in August. Pollinator needed: Gala.



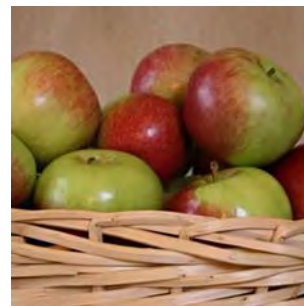
‘Mutsu Crispin’ Z. 4-8 Very large, crisp fruit. Harvest when green or allow to ripen to yellow. Fully ripens in October. Powdery mildew resistant. Pollinated by Fuji or Gala

SOLD OUT



‘Wealthy’

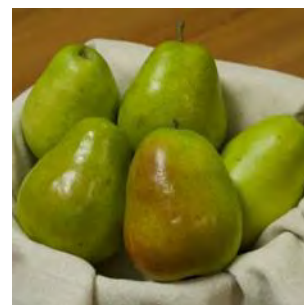
Z. 2-8 Multi-use heirloom variety. Crisp, juicy white flesh. Makes great pies, crisps, sauces, and cider. Long bloom-time makes it an excellent pollinator for other apples. Ripens in September. Gala, Cortland, Empire, Fuji, Granny Smith, McIntosh, and Cox Orange Pippin are good pollinators.



Pears: All pears are on OHxF333, a semi-dwarfing rootstock. This keeps the height of the trees to 2/3 the standard height or 12-18’ if not pruned. Trees on this rootstock may be kept to any height with summer pruning. Resistant to fire blight, collar rot and woolly pear aphid. All pears should be thinned when fruit is small to get good-sized pears in the fall. Harvest before fully ripe and allow to ripen inside to avoid mushy, grainy fruit.

‘D’Anjou’

Z. 5-8 Large, bright green at harvest and gains a hint of yellow as it ripens. Slightly sweet and fine textured. This pear stores for up to 7 months. Pollinated by Bartlett or Seckel.



‘Harrow Delight’

Z. 4-9 Fruit is similar to Bartlett. Yellow skin with attractive red blush. Smooth, fine flesh is especially flavorful. Pollinators include, Moonglow, Bartlett and D’Anjou.



‘Moonglow’

Z. 5-8 Large bartlett-type pear is soft and juicy without being mushy. Good for fresh eating and canning. This is a great pollinator for other pears. Ripens in September. Pollinated by Bartlett and Seckel.



‘Seckel’

Z. 5-8 These small dessert pears are extra sweet with just a hint of spice. Great for fresh eating and canning. Short harvest season in September. These fruits do not store well, so enjoy quickly! Moonglow is a pollinator.

SOLD OUT



‘Sensation Red Bartlett’

Z. 5-8 Similar to Bartlett, but with a higher sugar content. Bright red skin. Great when eaten fresh or canned. Moonglow is a pollinator.

